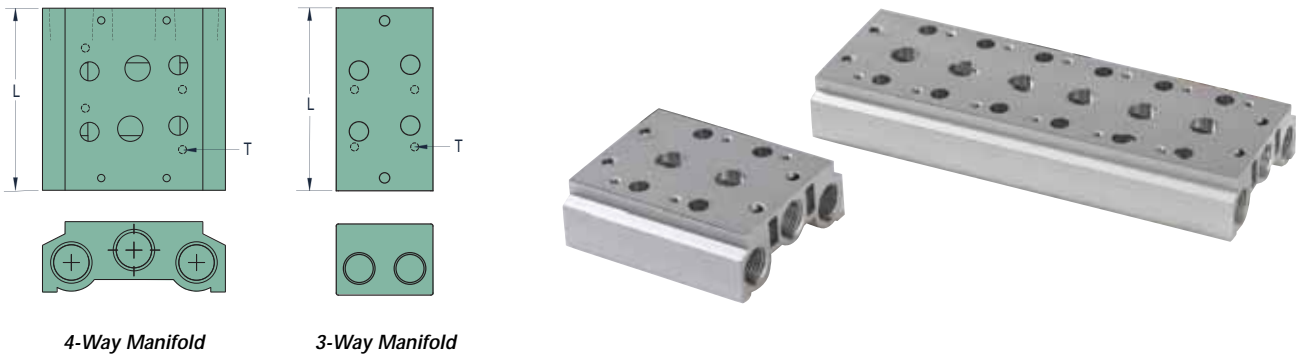




## Parallel Bar Manifolds



Valve Series	2-Station	4-Station	6-Station	8-Station	16-Station	"T" Mtg. Thread
MMA-31/41	2.24 (56.9)	3.73 (94.7)	5.25 (133.4)	6.75 (171.5)	12.69 (322.3)	M4
MMA-32/42	2.71 (68.8)	4.50 (114.3)	6.33 (160.8)	8.13 (206.5)	15.38 (390.7)	M4
MMA-33/43	3.22 (81.8)	5.42 (137.7)	7.62 (193.5)	9.82 (249.4)	18.63 (473.2)	M5
MMA-34/44	3.85 (97.8)	6.56 (166.6)	9.38 (238.3)	12.10 (307.3)	23.11 (587.0)	M5

Parallel circuit manifold bars are available for all sizes of MMA 3- and 4-way valves. Manifolds are made in increments of two stations from two to 16, and are supplied with mounting screws and gaskets. Spare kits are also available which include two screws and a gasket. Blank plate supplied with one gasket, two screws and metal plate.

Valve Series	Manifold Inlet/		2-Station	4-Station	6-Station	8-Station	16-Station
	Exhaust	Blank Plate					
<b>3-Way Valve Manifolds</b>							
MMA-31	1/8"	MMM-31-B	MMM-31-02	MMM-31-04	MMM-31-06	MMM-31-08	MMM-31-16
MMA-32	1/4"	MMM-32-B	MMM-32-02	MMM-32-04	MMM-32-06	MMM-32-08	MMM-32-16
MMA-33	3/8"	MMM-33-B	MMM-33-02	MMM-33-04	MMM-33-06	MMM-33-08	MMM-33-16
MMA-34	1/2"	MMM-34-B	MMM-34-02	MMM-34-04	MMM-34-06	MMM-34-08	MMM-34-16

### 3-Way Spare Mounting Kit Hardware

27041-31 . . . . .	Hardware Kit for MMA-31 Series Valves	27041-33 . . . . .	Hardware Kit for MMA-33 Series Valves
27041-32 . . . . .	Hardware Kit for MMA-32 Series Valves	27041-34 . . . . .	Hardware Kit for MMA-34 Series Valves

Valve Series	Manifold Inlet/		2-Station	4-Station	6-Station	8-Station	16-Station
	Exhaust	Blank Plate					
<b>4-Way Valve Manifolds</b>							
MMA-41	1/4"	MMM-41-B	MMM-41-02	MMM-41-04	MMM-41-06	MMM-41-08	MMM-41-16
MMA-42	1/4"	MMM-42-B	MMM-42-02	MMM-42-04	MMM-42-06	MMM-42-08	MMM-42-16
MMA-43	3/8"	MMM-43-B	MMM-43-02	MMM-43-04	MMM-43-06	MMM-43-08	MMM-43-16
MMA-44	1/2"	MMM-44-B	MMM-44-02	MMM-44-04	MMM-44-06	MMM-44-08	MMM-44-16

### 4-Way Spare Mounting Kit Hardware

27041-41 . . . . .	Hardware Kit for MMA-41 Series Valves	27041-43 . . . . .	Hardware Kit for MMA-43 Series Valves
27041-42 . . . . .	Hardware Kit for MMA-42 Series Valves 2	27041-44 . . . . .	Hardware Kit for MMA-44 Series Valves

### Rebuild Kits.

Convenient rebuild kits are available which contain common maintenance items that may be needed during the life of the valve. Each contains a spool, diamond seal, two pilot seals, two pistons with seals, and spring. Consult factory for 3-position kits.

### Part No.

27040-31	3-Way Kit, MMA-31
27040-32	3-Way Kit, MMA-32
27040-33	3-Way Kit, MMA-33
27040-34	3-Way Kit, MMA-34
27040-41	4-Way 2 Pos. Kit, MMA-41
27040-42	4-Way 2 Pos. Kit, MMA-42
27040-43	4-Way 2 Pos. Kit, MMA-43
27040-44	4-Way 2 Pos. Kit, MMA-44